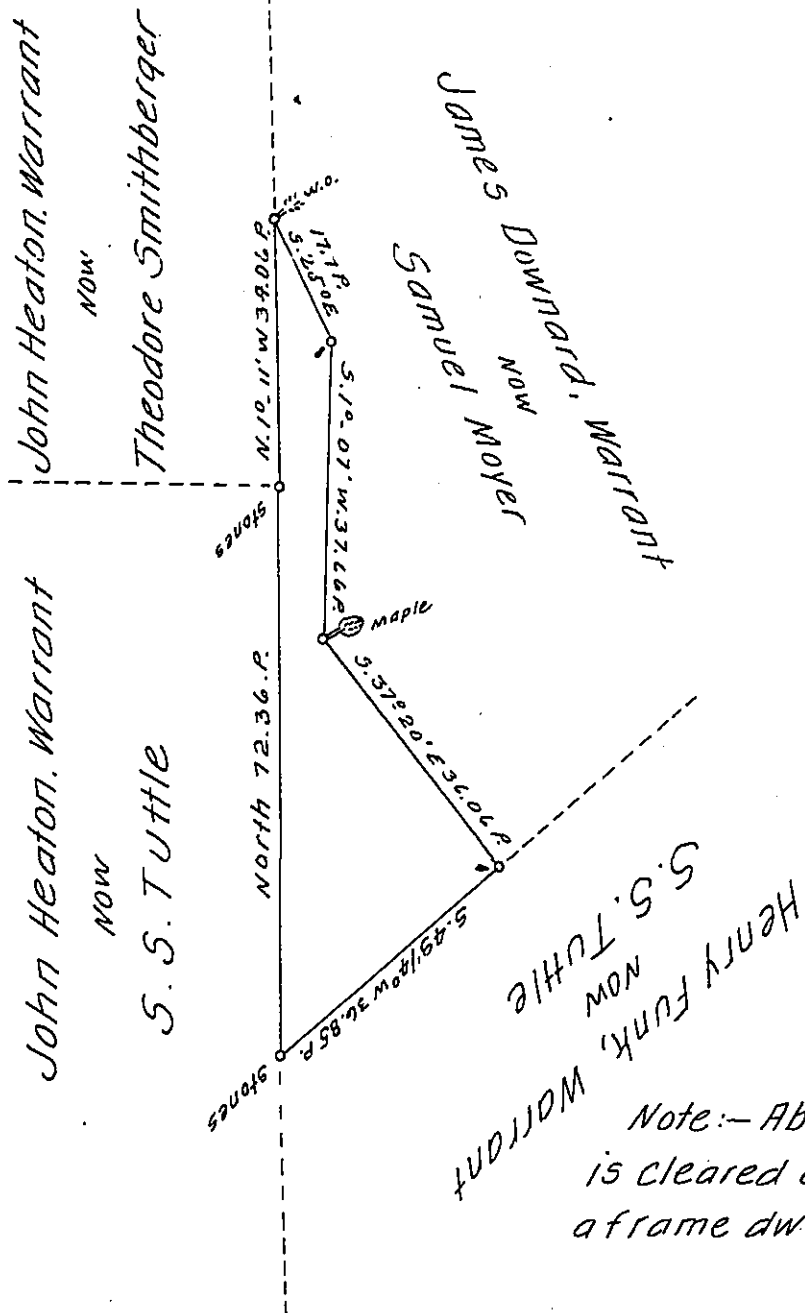


FORM No. 1.



A Draft of a tract of land situated in the Township of Wharton and County of Fayette, containing Six (6) acres, 101 perches and allowance of six per cent. for roads, etc. Surveyed for S. S. Tuttle the 25<sup>th</sup> day of December 1899. ~~in being part of a larger tract containing - acres, - perches and allowance, originally surveyed in pursuance of a warrant granted to S. S. Tuttle dated the 4<sup>th</sup> day of December 1899.~~

To James W. Latta, Esq, } S. M. Foust  
 Secretary of Internal Affairs. } County Surveyor.

Note.-When this form is used the County Surveyor should indicate by dotted lines the remainder of the original survey, thus showing the location of the part returned. See paragraph nine of instructions to County Surveyors.

IN TESTIMONY that the above is a copy of the original remaining on file in the Department of Internal Affairs of Pennsylvania, made conformably to an Act of Assembly approved the 16th day of February 1833, I have hereunto set my hand and caused the Seal of said Department to be affixed at Harrisburg, this thirtieth day of October 1907.

*Henry Howell*  
 Secretary of Internal Affairs.